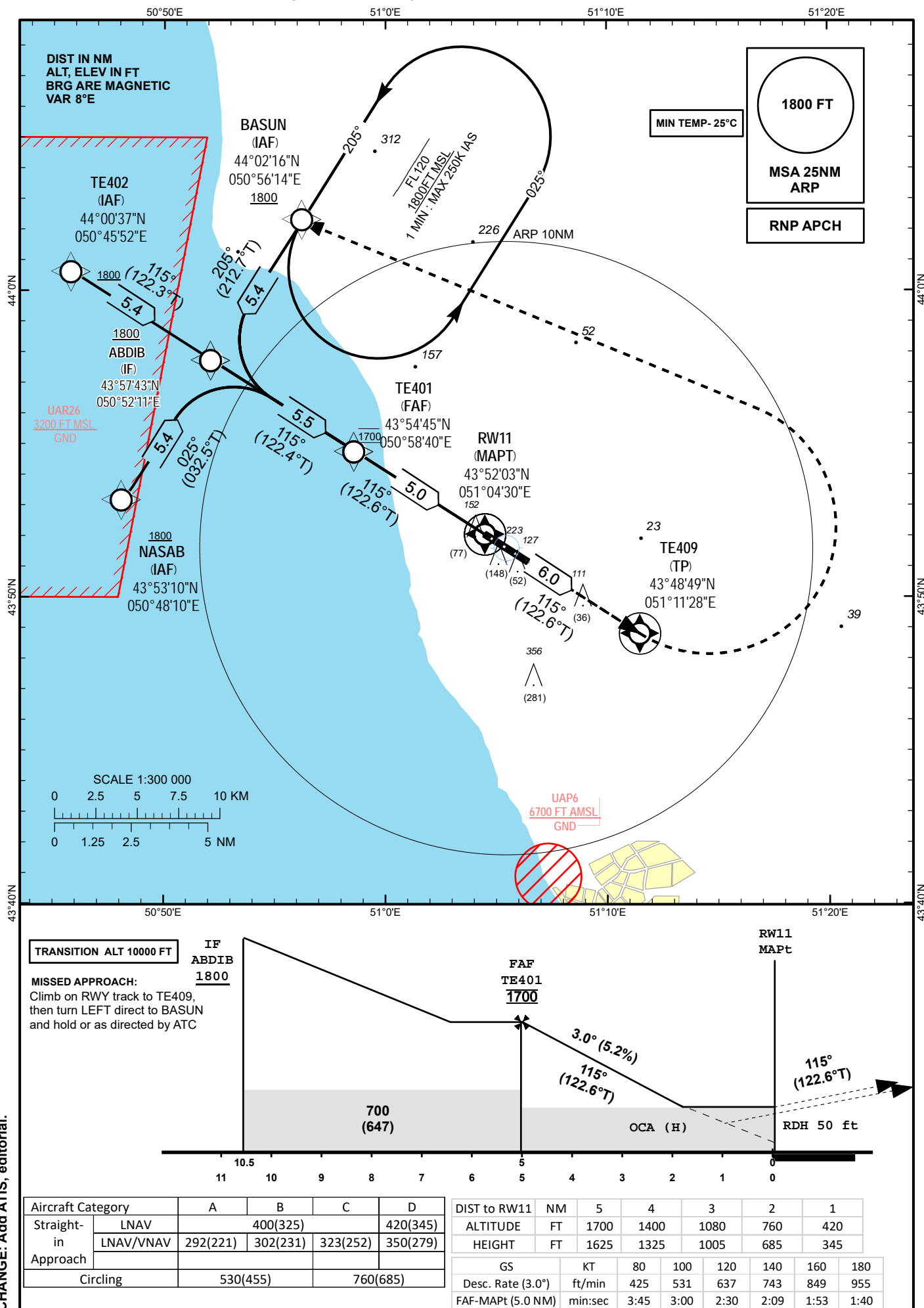


INSTRUMENT APPROACH
CHART
ICAO

AERODROME ELEV **75 FT**
THR RWY 11 - ELEV **71 FT**
HEIGHTS RELATED TO AD ELEV

AKTAU TOWER 120.7
AKTAU ATIS (EN) 130.1
AKTAU ATIS (RU) 126.2

AKTAU
RNP RWY 11



CHANGE: Add ATIS, editorial.

TABULAR DESCRIPTION

| RNP RWY 11 | | | | | | | | | | |
|---------------|-------------|-----------------|---------|----------------|---------------|----------------|---------------|-------------|---------|--------------------------|
| Serial Number | Waypoint ID | Path Descriptor | Flyover | Course °M (°T) | Distance (NM) | Turn Direction | Altitude (ft) | Speed (kts) | VPA/TCH | Navigation Specification |
| 010 | BASUN | IF | – | – | – | – | +1800 | – | – | RNP APCH |
| 020 | ABDIB | TF | – | 205 (122.7) | 5.4 | – | +1800 | – | – | RNP APCH |
| 010 | TE402 | IF | – | – | – | – | +1800 | – | – | RNP APCH |
| 020 | ABDIB | TF | – | 115 (122.3) | 5.4 | – | +1800 | – | – | RNP APCH |
| 010 | NASAB | IF | – | – | – | – | +1800 | – | – | RNP APCH |
| 020 | ABDIB | TF | – | 025 (032.5) | 5.4 | – | +1800 | – | – | RNP APCH |
| 010 | ABDIB | IF | – | – | – | – | +1800 | – | – | RNP APCH |
| 020 | TE401 | TF | – | 115 (122.4) | 5.5 | – | @1700 | – | – | RNP APCH |
| 030 | RW11 | TF | Y | 115 (122.6) | 5.0 | – | @121 | – | -3.0/50 | RNP APCH |
| 040 | TE409 | TF | Y | 115 (122.6) | 6.0 | – | – | – | – | RNP APCH |
| 050 | BASUN | DF | – | – | – | L | -FL120 +1800 | – | – | RNP APCH |
| 060 | BASUN | HM | – | 205 (121.7) | – | L | -FL120 +1800 | -250 | – | RNP APCH |

WAYPOINT LIST

| RNP RWY 11 | |
|---------------------|------------------------|
| Waypoint Identifier | Coordinates |
| BASUN | 440216.0 N 0505613.9 E |
| NASAB | 435310.2 N 0504810.1 E |
| TE402 | 440036.8N 0504552.2E |
| ABDIB | 435743.2N 0505211.4E |
| TE401 | 435444.8N 0505839.8E |
| RW11 | 435203.01N 0510429.51E |
| TE409 | 434848.6N 0511128.4E |